



sound insulation • decorative acoustics

PHONOTECH VR ASSEMBLY INSTRUCTIONS

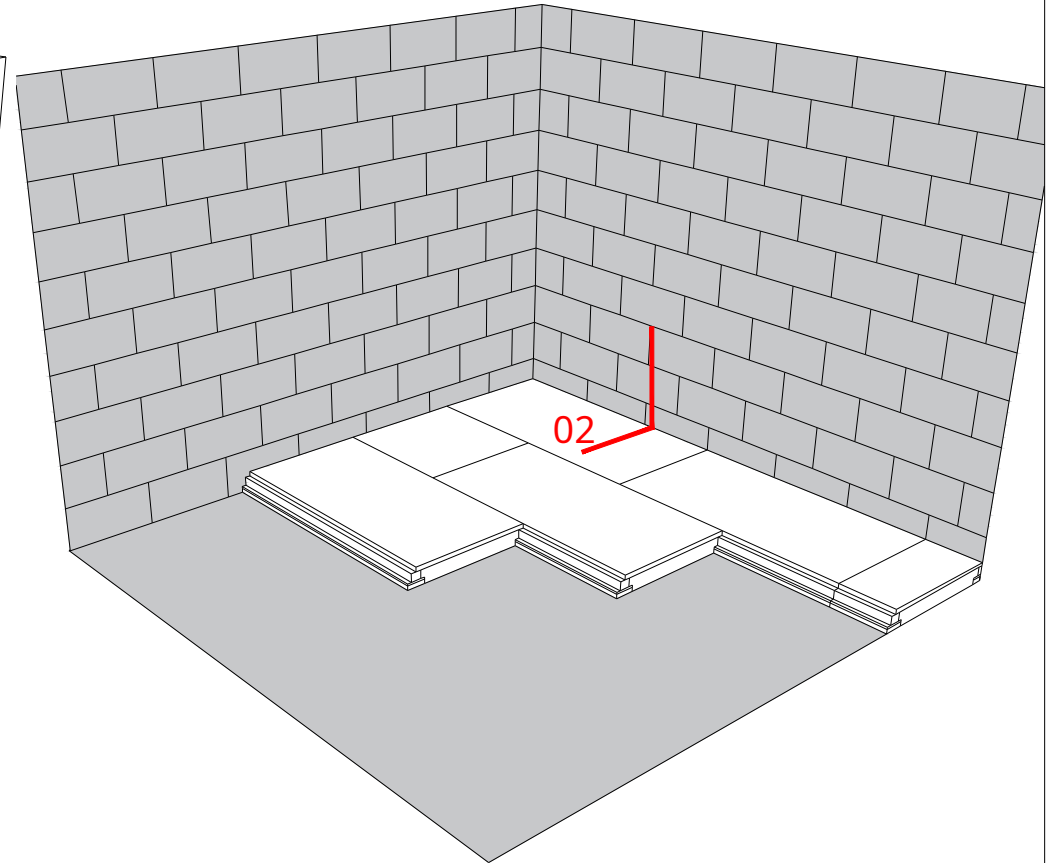
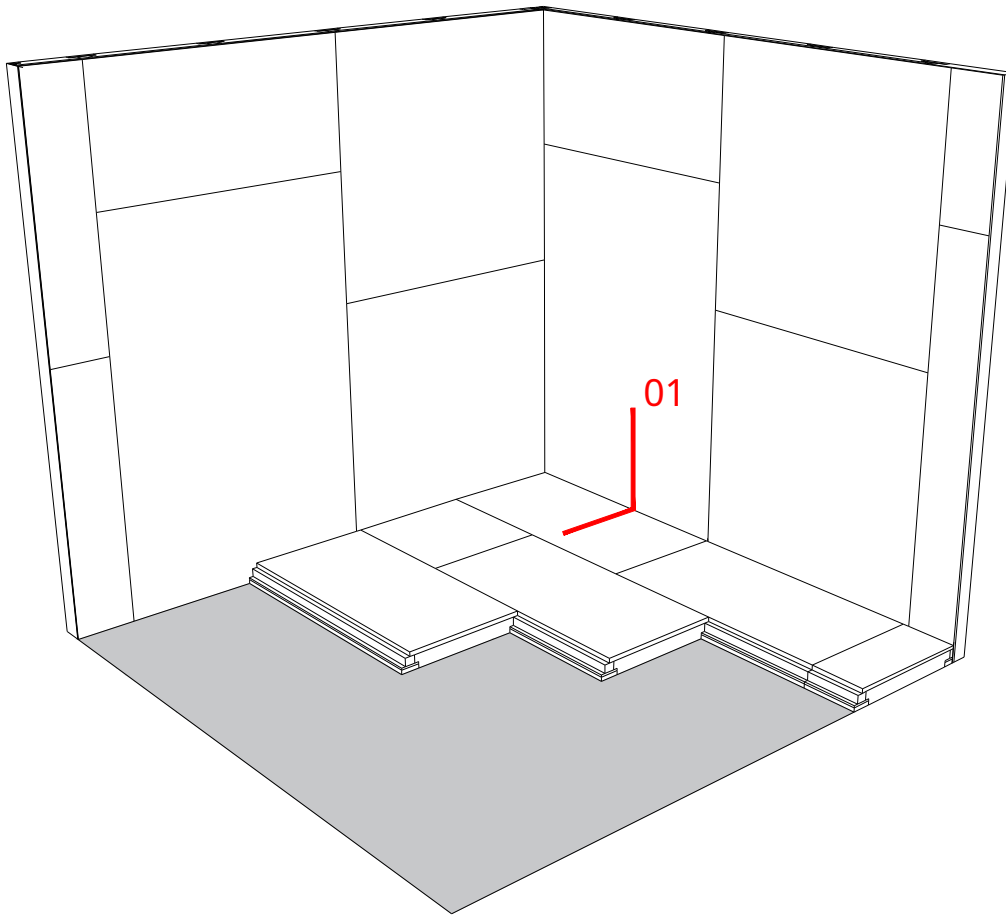
FLOORS



+32 (0)87 33 33 30
info@phonotech.com
www.phonotech.com

POSE PHONOTECH VR versus PHONOTECH PH

PHONOTECH VR INSTALLATION against masonry

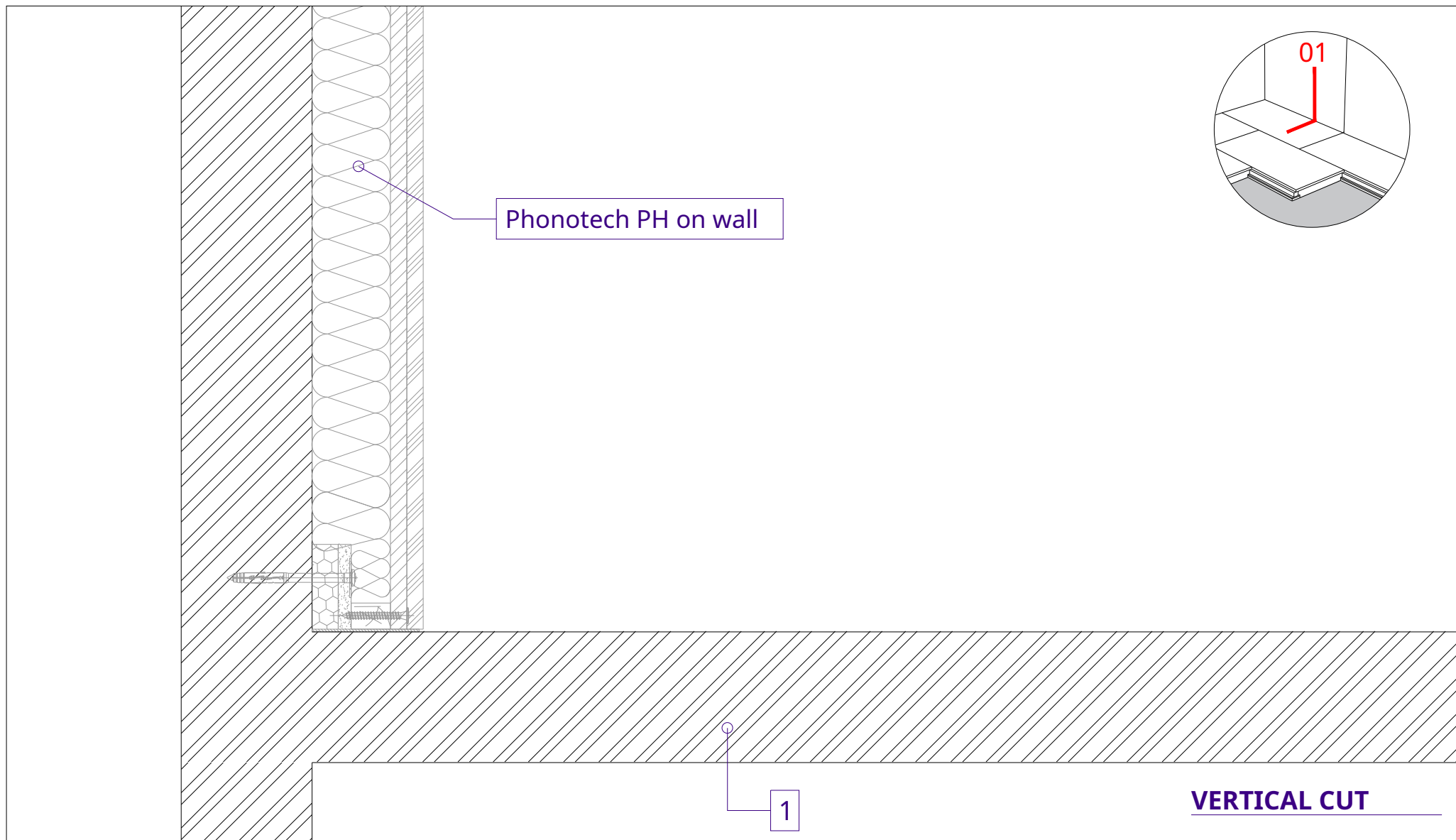


Detail 1. Vertical section at the junction between floor & Phonotech PH

Detail 2. Vertical section at the junction between floor & walls



- For walls and ceilings, refer to the assembly instructions for PHONOTECH PH panels



1. Supporting structure: wood, concrete, etc.

2. Uncoupling strip

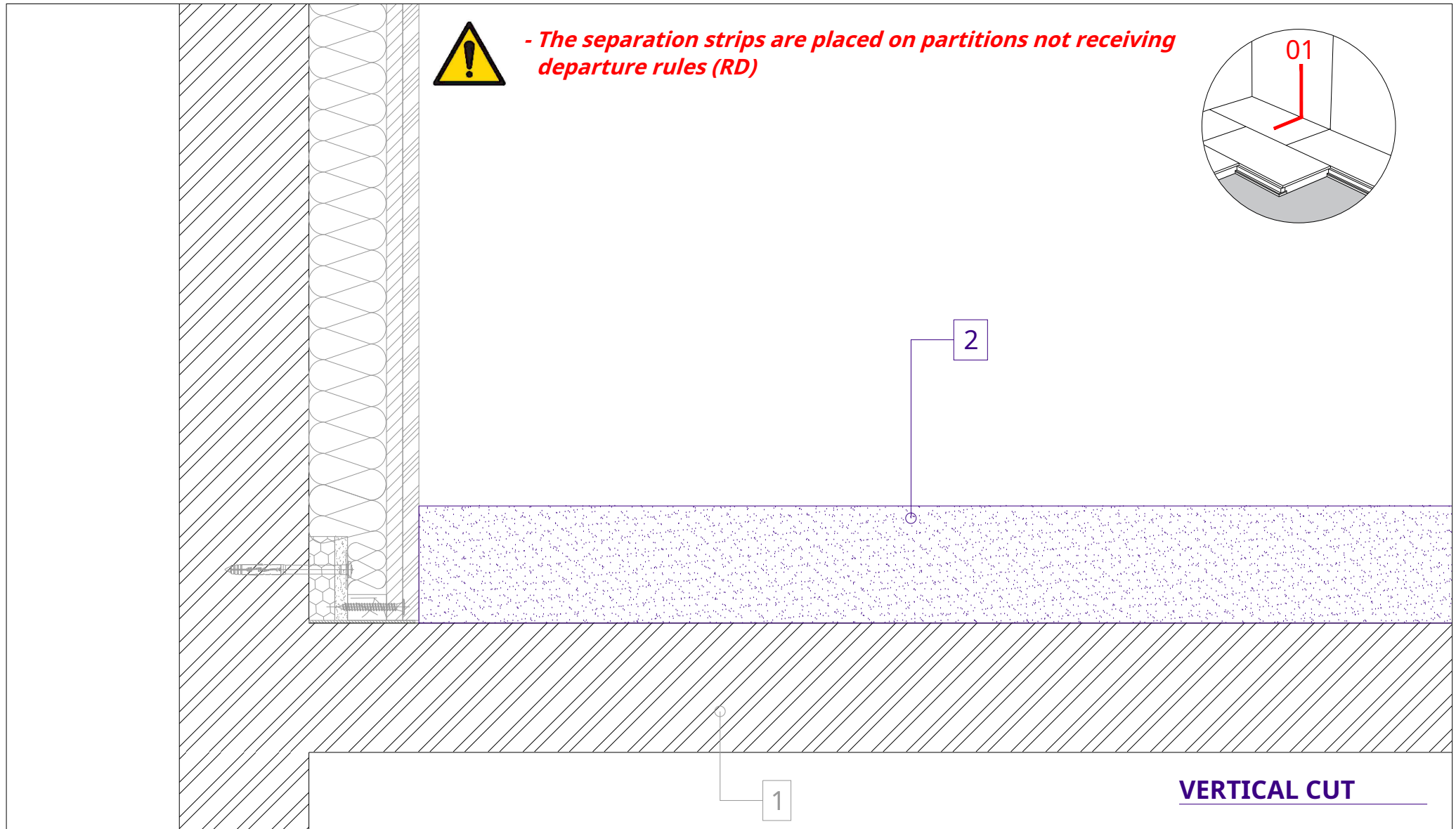
3. PHONOTECH RD starting rule

4. PHONOTECH VR acoustic panels (600 x 1200 mm)

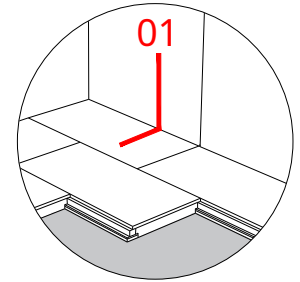
5. Distribution plates

6. Flooring

7. Peripheral acrylic seal



- The separation strips are placed on partitions not receiving departure rules (RD)



1. Supporting structure: wood, concrete, etc.

2. Uncoupling strip

3. PHONOTECH RD starting rule

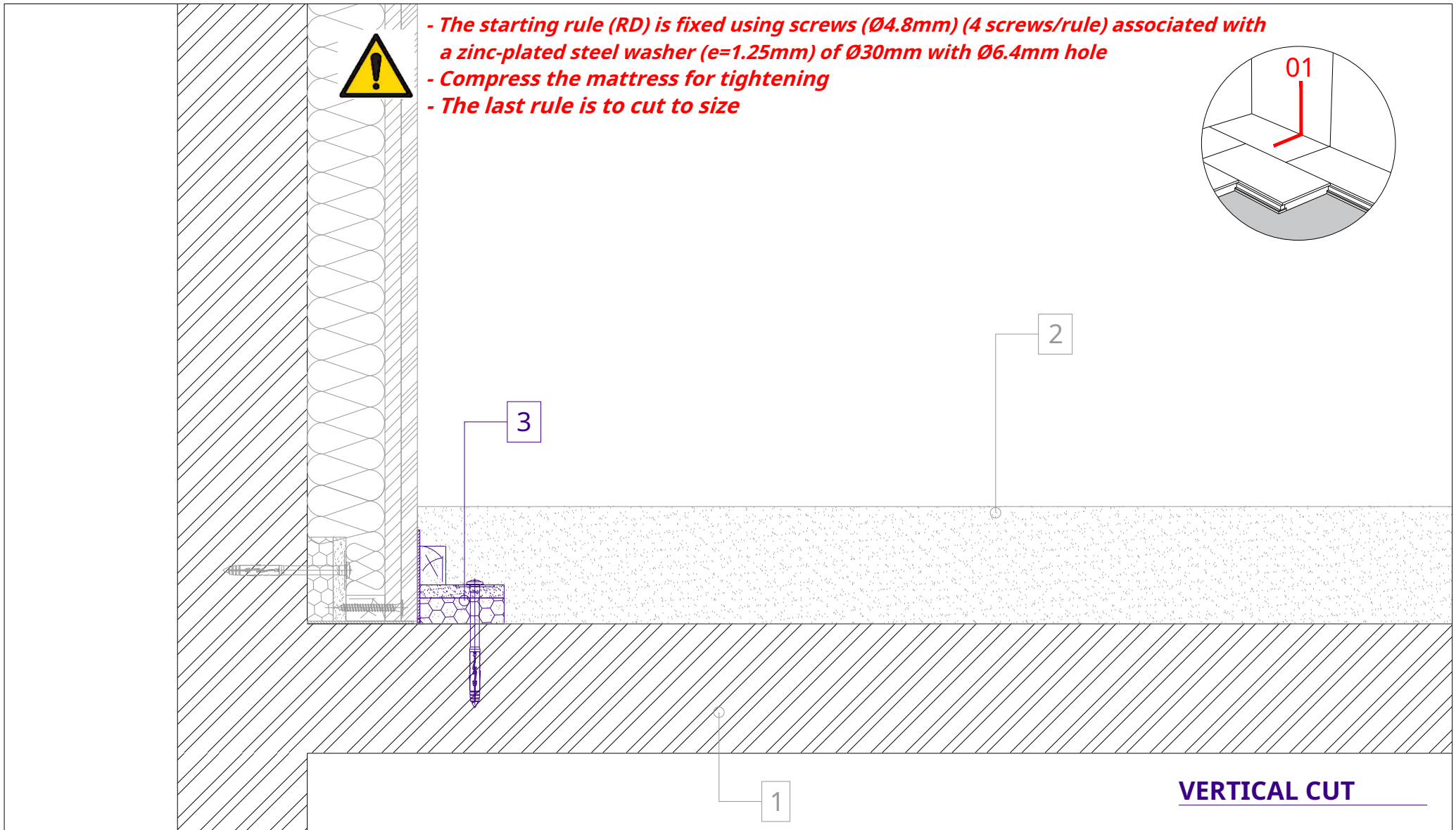
4. PHONOTECH VR acoustic panels (600 x 1200 mm)

5. Distribution plates

6. Flooring

7. Peripheral acrylic seal

VERTICAL CUT



- The starting rule (RD) is fixed using screws ($\varnothing 4.8\text{mm}$) (4 screws/rule) associated with a zinc-plated steel washer ($e=1.25\text{mm}$) of $\varnothing 30\text{mm}$ with $\varnothing 6.4\text{mm}$ hole
- Compress the mattress for tightening
- The last rule is to cut to size

1. Supporting structure: wood, concrete, etc.

2. Uncoupling strip

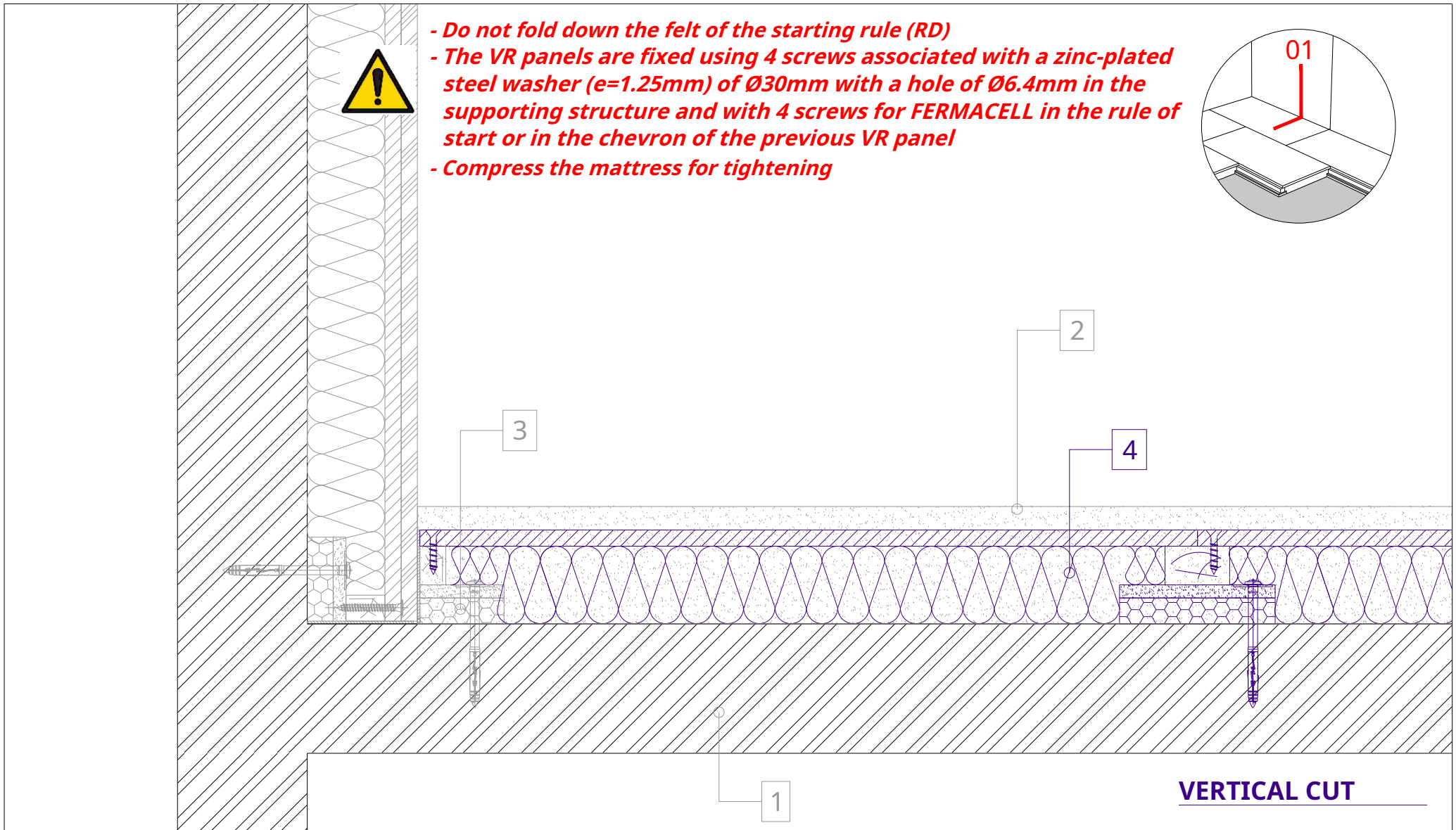
3. PHONOTECH RD starting rule

4. PHONOTECH VR acoustic panels (600 x 1200 mm)

5. Distribution plates

6. Flooring

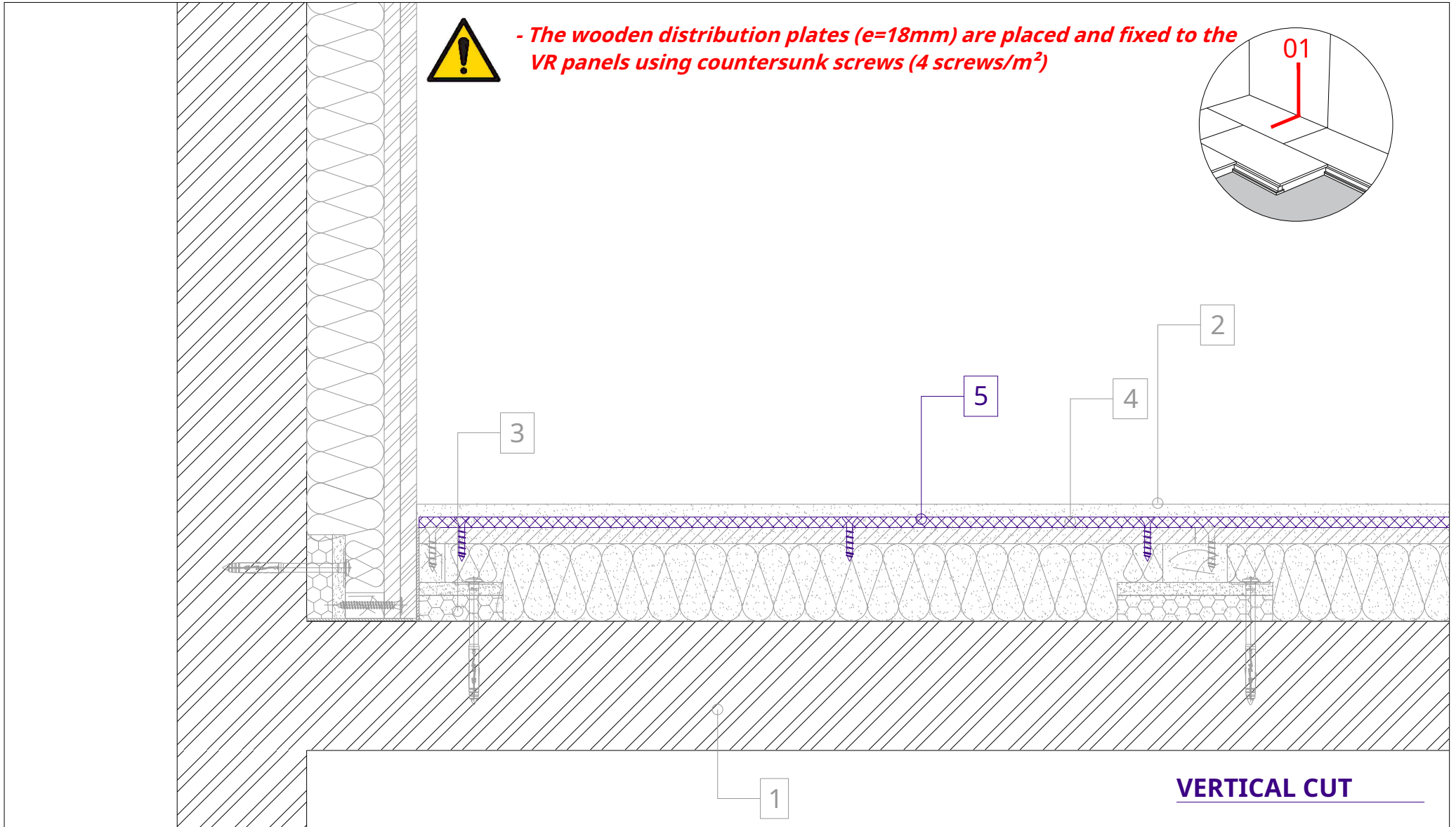
7. Peripheral acrylic seal



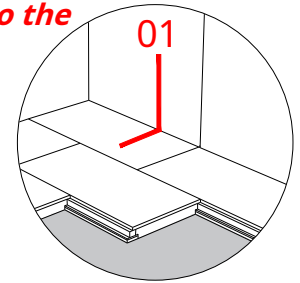
- Do not fold down the felt of the starting rule (RD)
- The VR panels are fixed using 4 screws associated with a zinc-plated steel washer (e=1.25mm) of Ø30mm with a hole of Ø6.4mm in the supporting structure and with 4 screws for FERMACELL in the rule of start or in the chevron of the previous VR panel
- Compress the mattress for tightening

- 1. Supporting structure: wood, concrete, etc.
- 2. Uncoupling strip
- 3. PHONOTECH RD starting rule
- 4. PHONOTECH VR acoustic panels (600 x 1200 mm)

- 5. Distribution plates
- 6. Flooring
- 7. Peripheral acrylic seal



- The wooden distribution plates (e=18mm) are placed and fixed to the VR panels using countersunk screws (4 screws/m²)

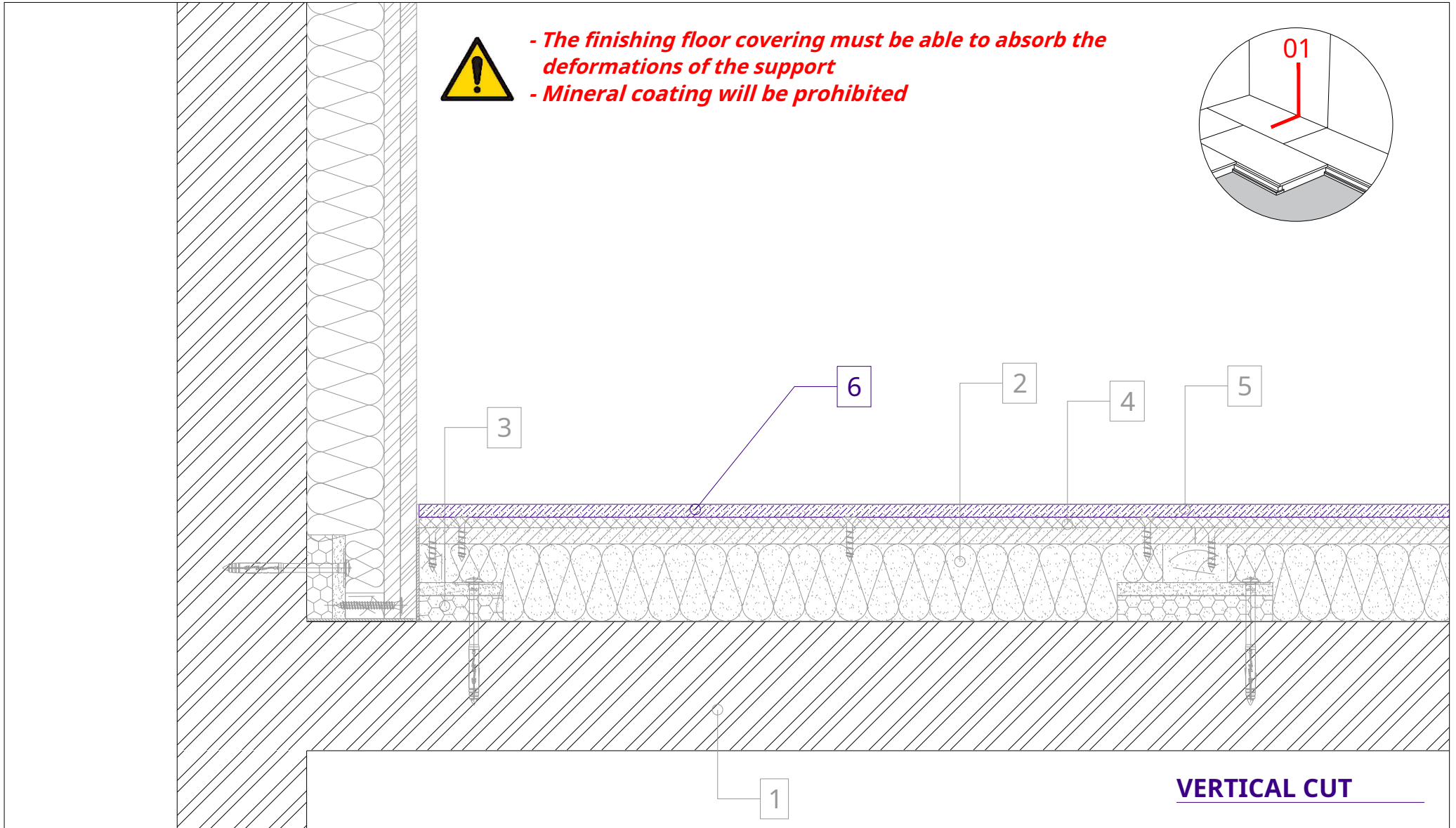
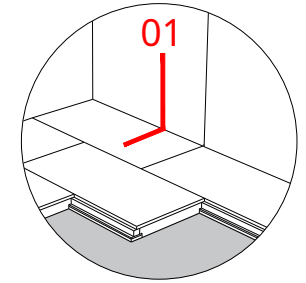


- 1. Supporting structure: wood, concrete, etc.
- 2. Uncoupling strip
- 3. PHONOTECH RD starting rule
- 4. PHONOTECH VR acoustic panels (600 x 1200 mm)

- 5. Distribution plates
- 6. Flooring
- 7. Peripheral acrylic seal



- The finishing floor covering must be able to absorb the deformations of the support
- Mineral coating will be prohibited



VERTICAL CUT

1. Supporting structure: wood, concrete, etc.

2. Uncoupling strip

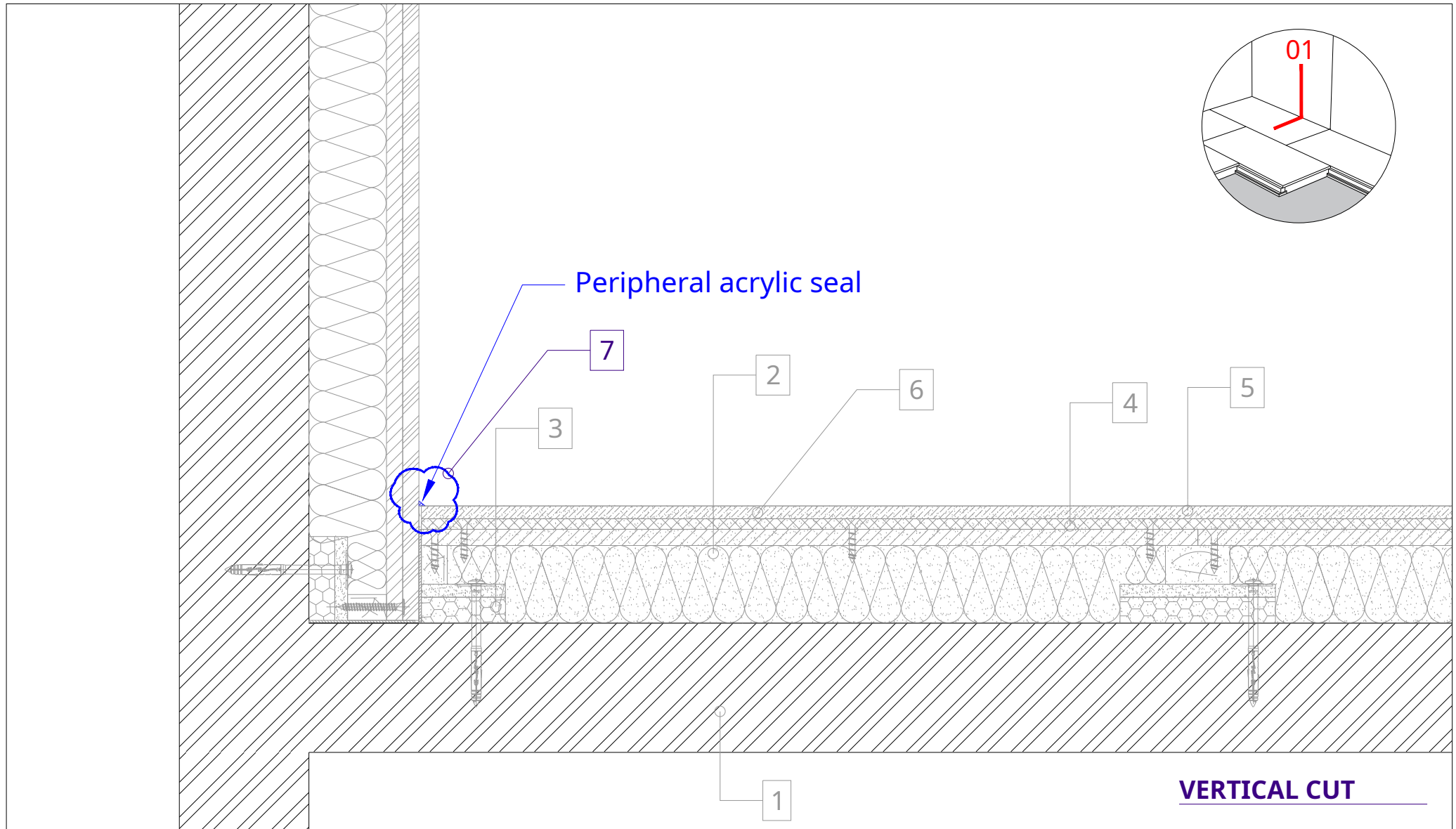
3. PHONOTECH RD starting rule

4. PHONOTECH VR acoustic panels (600 x 1200 mm)

5. Distribution plates

6. Flooring

7. Peripheral acrylic seal



1. Supporting structure: wood, concrete, etc.

2. Uncoupling strip

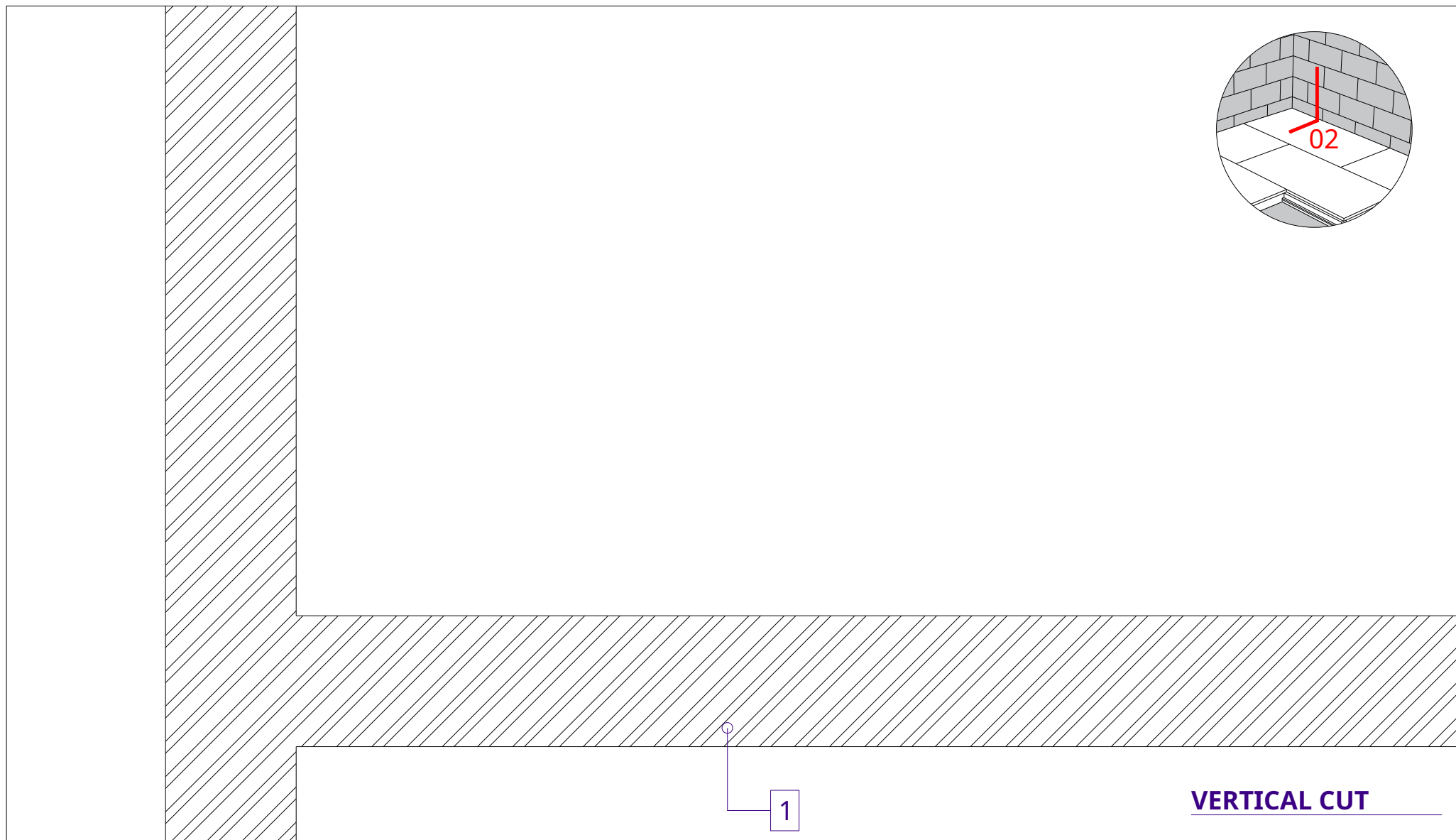
3. PHONOTECH RD starting rule

4. PHONOTECH VR acoustic panels (600 x 1200 mm)

5. Distribution plates

6. Flooring

7. Peripheral acrylic seal



1. Supporting structure: wood, concrete, etc.

2. Uncoupling strip

3. PHONOTECH RD starting rule

4. PHONOTECH VR acoustic panels (600 x 1200 mm)

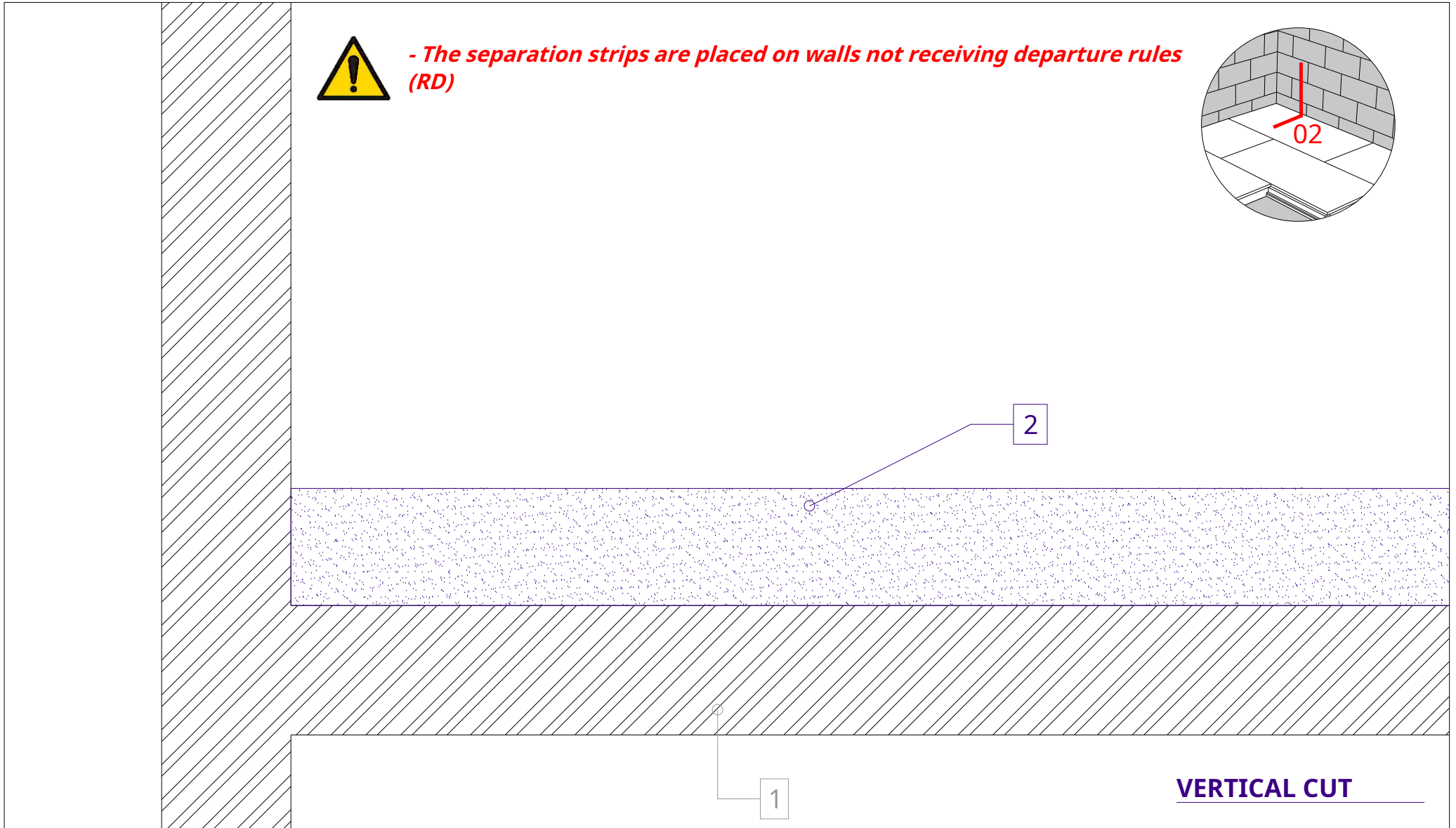
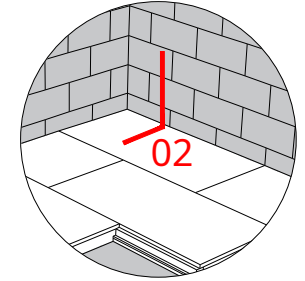
5. Distribution plates

6. Flooring

7. Peripheral acrylic seal



- The separation strips are placed on walls not receiving departure rules (RD)



1. Supporting structure: wood, concrete, etc.

2. Uncoupling strip

3. PHONOTECH RD starting rule

4. PHONOTECH VR acoustic panels (600 x 1200 mm)

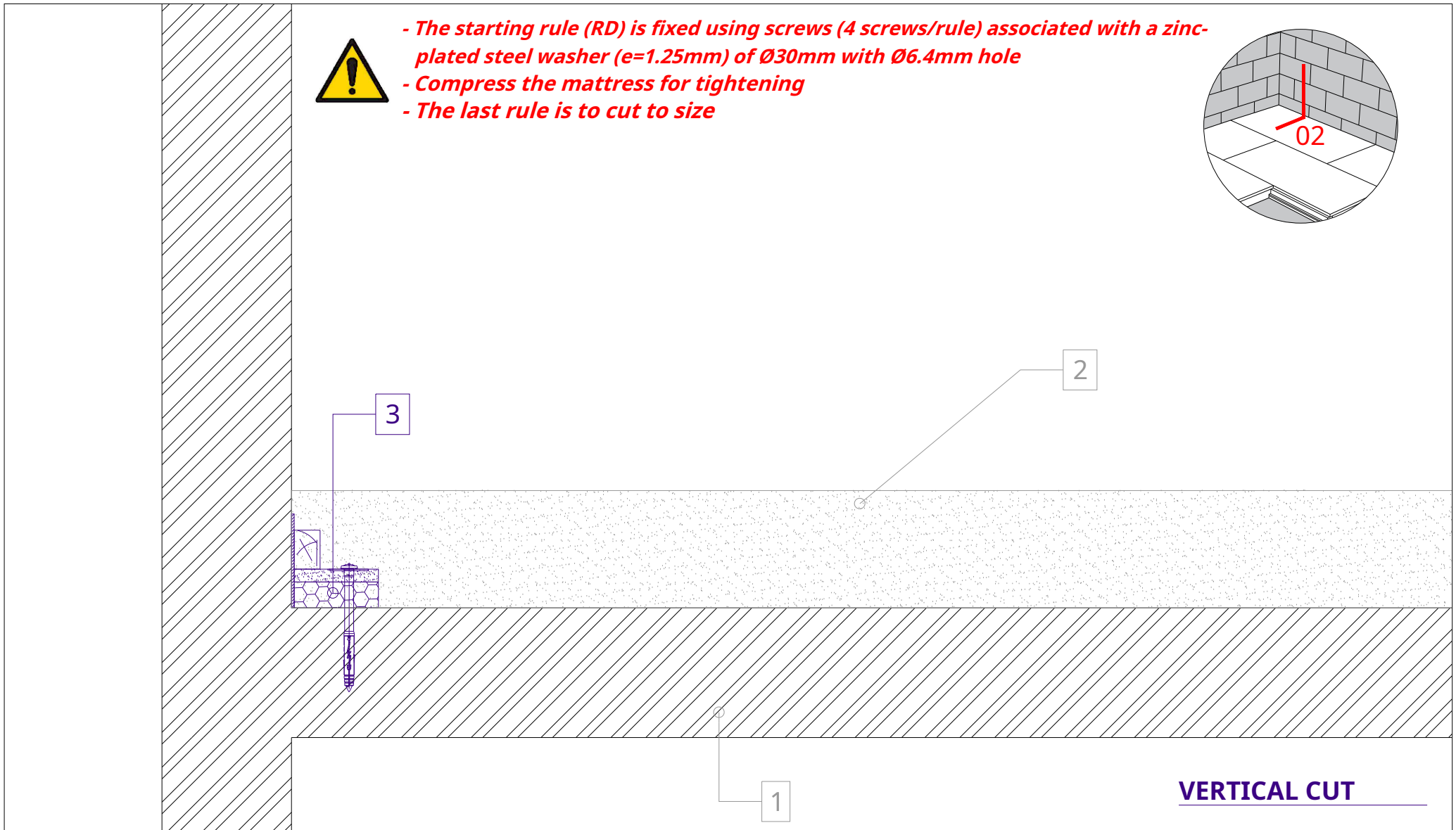
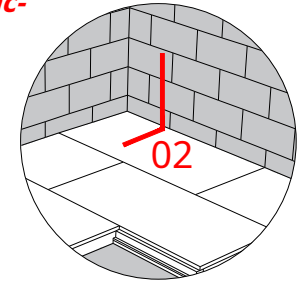
5. Distribution plates

6. Flooring

7. Peripheral acrylic seal



- The starting rule (RD) is fixed using screws (4 screws/rule) associated with a zinc-plated steel washer (e=1.25mm) of Ø30mm with Ø6.4mm hole
- Compress the mattress for tightening
- The last rule is to cut to size



VERTICAL CUT

1. Supporting structure: wood, concrete, etc.

2. Uncoupling strip

3. PHONOTECH RD starting rule

4. PHONOTECH VR acoustic panels (600 x 1200 mm)

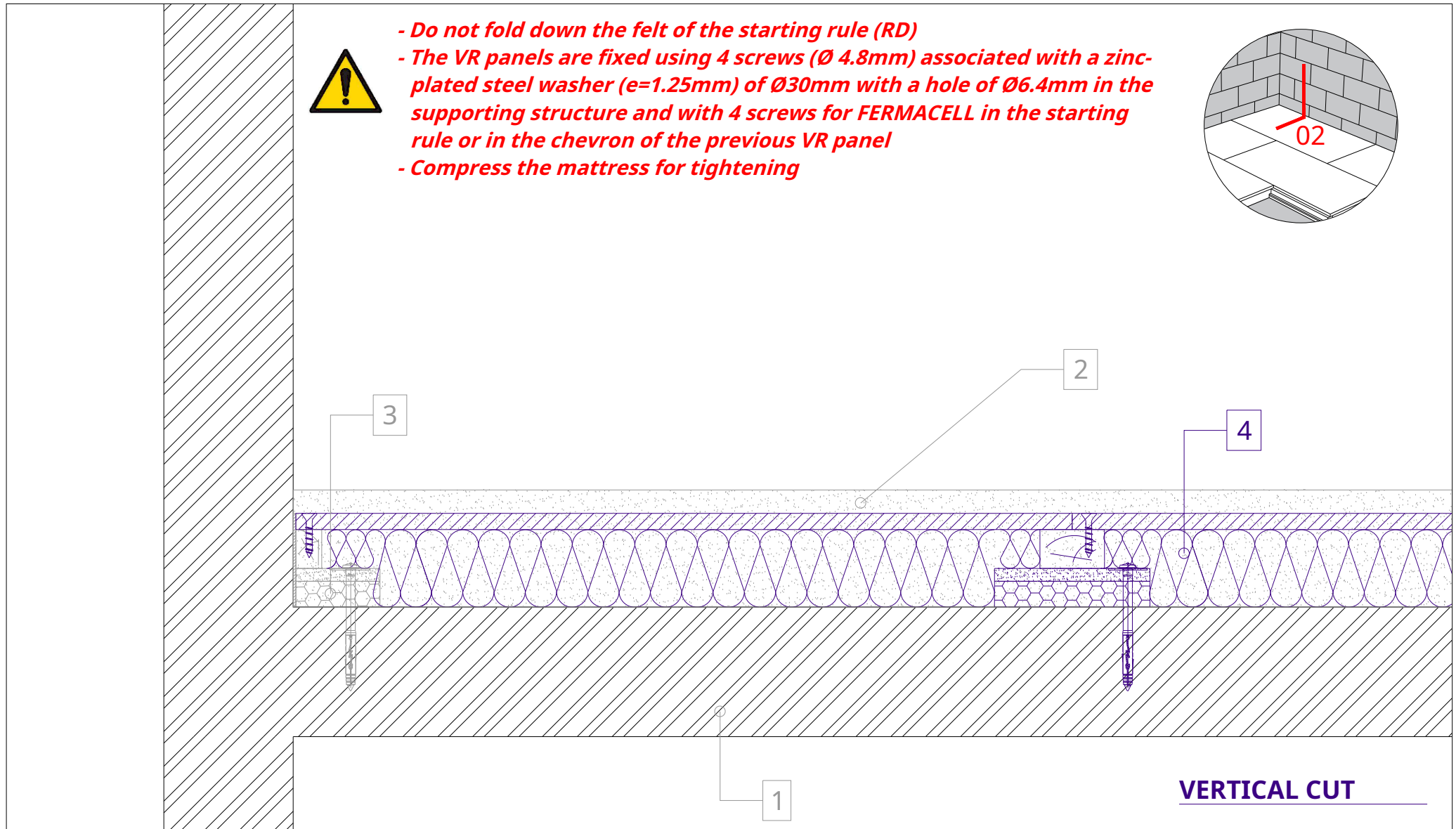
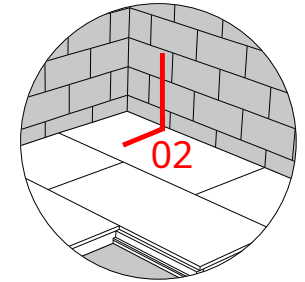
5. Distribution plates

6. Flooring

7. Peripheral acrylic seal



- Do not fold down the felt of the starting rule (RD)
- The VR panels are fixed using 4 screws (Ø 4.8mm) associated with a zinc-plated steel washer (e=1.25mm) of Ø30mm with a hole of Ø6.4mm in the supporting structure and with 4 screws for FERMACELL in the starting rule or in the chevron of the previous VR panel
- Compress the mattress for tightening



VERTICAL CUT

1. Supporting structure: wood, concrete, etc.

2. Uncoupling strip

3. PHONOTECH RD starting rule

4. PHONOTECH VR acoustic panels (600 x 1200 mm)

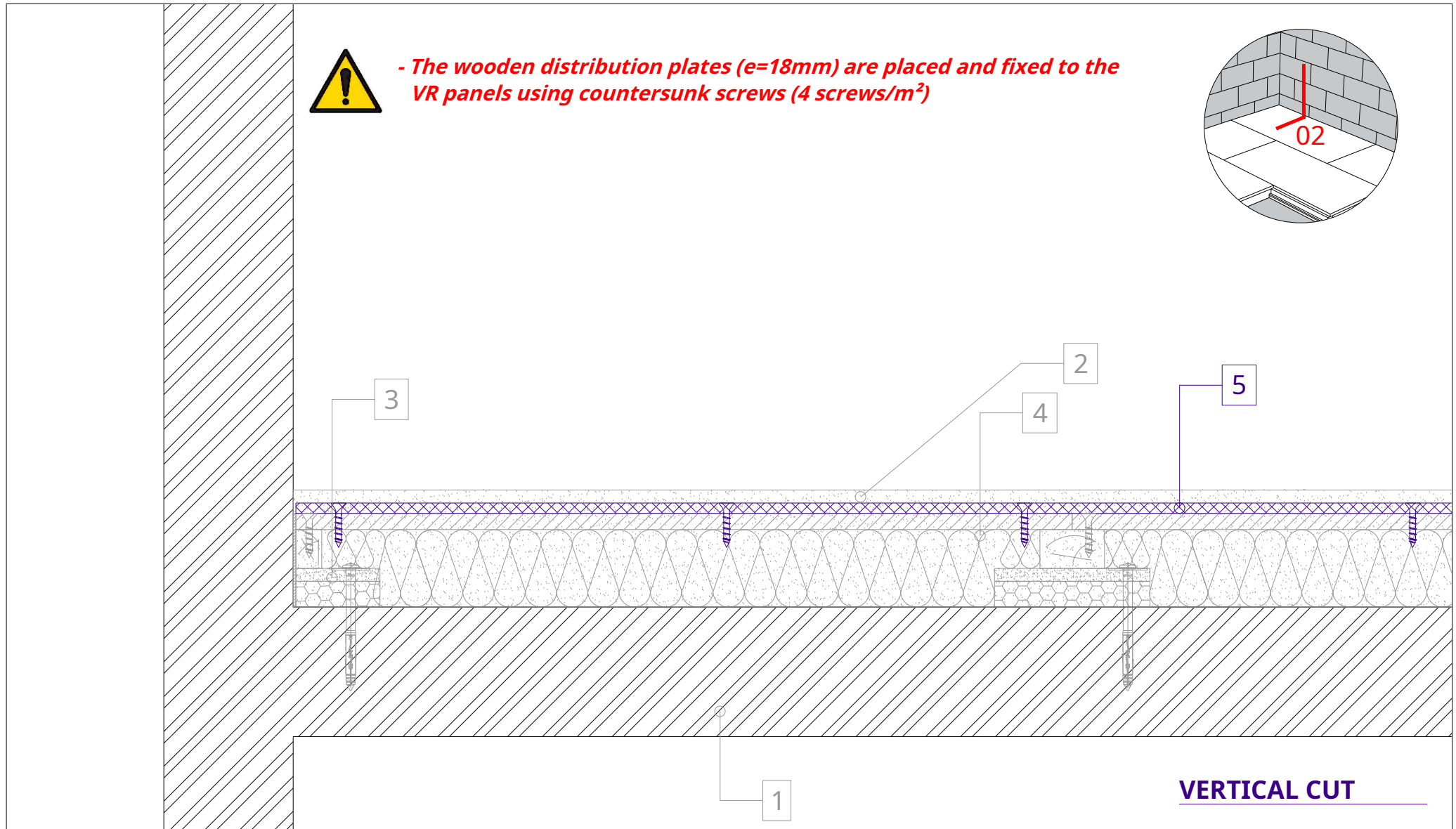
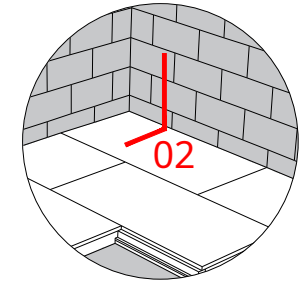
5. Distribution plates

6. Flooring

7. Peripheral acrylic seal



- The wooden distribution plates (e=18mm) are placed and fixed to the VR panels using countersunk screws (4 screws/m²)

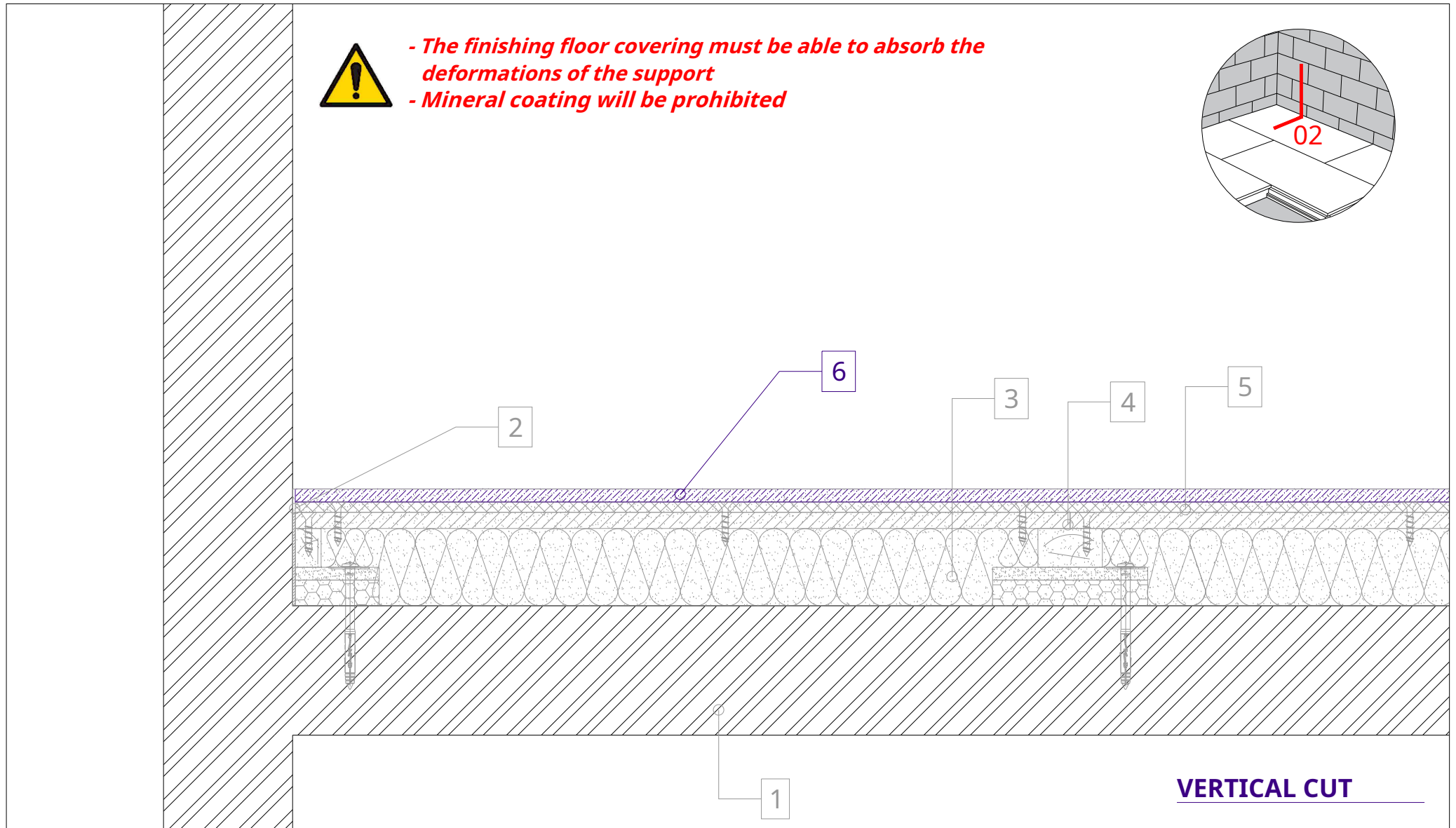
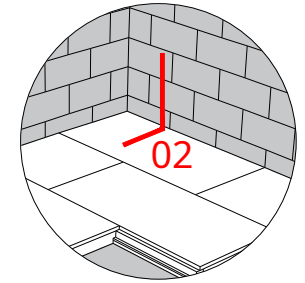


- 1. Supporting structure: wood, concrete, etc.
- 2. Uncoupling strip
- 3. PHONOTECH RD starting rule
- 4. PHONOTECH VR acoustic panels (600 x 1200 mm)

- 5. Distribution plates
- 6. Flooring
- 7. Peripheral acrylic seal

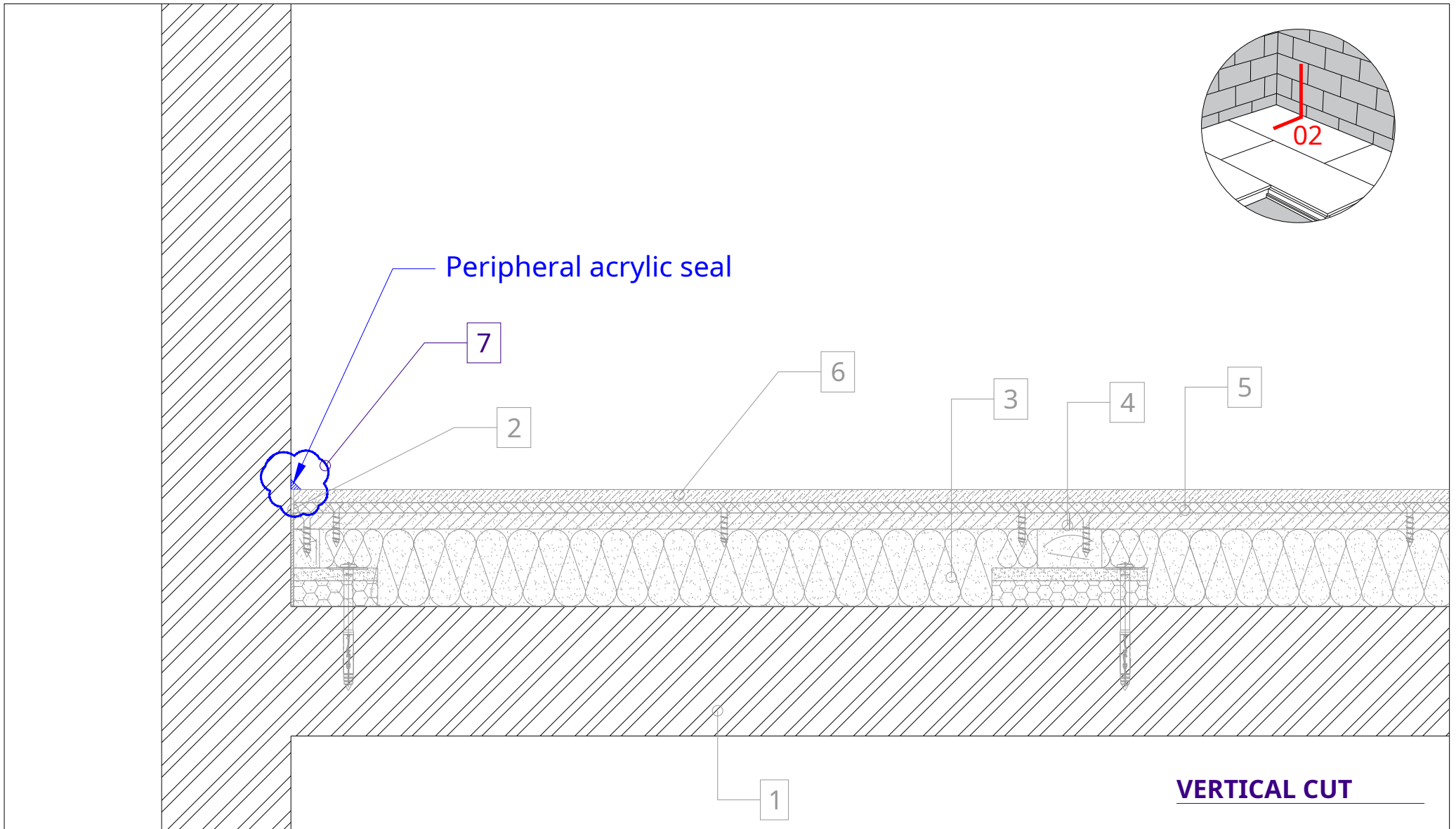


- The finishing floor covering must be able to absorb the deformations of the support
- Mineral coating will be prohibited



- 1. Supporting structure: wood, concrete, etc.
- 2. Uncoupling strip
- 3. PHONOTECH RD starting rule
- 4. PHONOTECH VR acoustic panels (600 x 1200 mm)

- 5. Distribution plates
- 6. Flooring
- 7. Peripheral acrylic seal



1. Supporting structure: wood, concrete, etc.

2. Uncoupling strip

3. PHONOTECH RD starting rule

4. PHONOTECH VR acoustic panels (600 x 1200 mm)

5. Distribution plates

6. Flooring

7. Peripheral acrylic seal